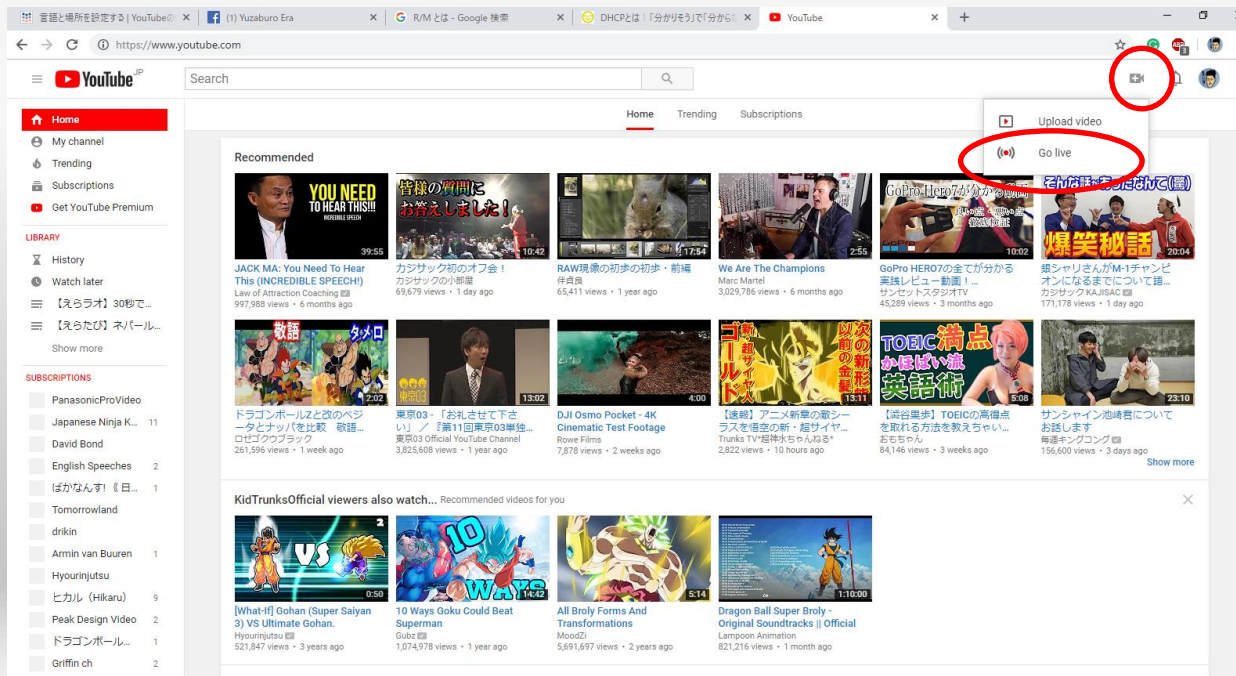
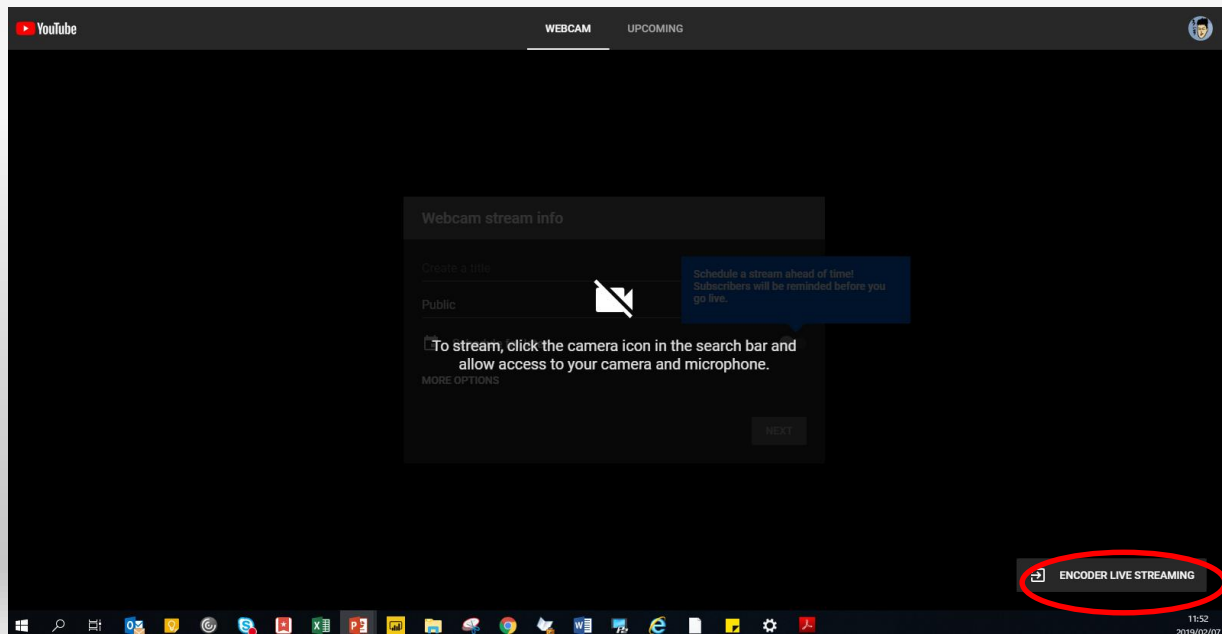


How to Connect with YouTube Live ~Step01~



Go to your own YouTube page
↓
GO to the Video Mark on Right-Up side
↓
Click “Go live”

How to Connect with YouTube Live ~Step02~



Click “ENCODER LIVE STREAMING”

How to Connect with YouTube Live ~Step03~



CREATOR STUDIO

OFFLINE

Welcome back, えらチャンネル!

LIVE STREAMING CHECKLIST

- Set up encoding software
- Add stream info
- Optional features
- Go live

ENCODER SETUP

Server URL
rtmp://a.rtmp.youtube.com/live2

Stream name/key
.....

1

2

Scroll downside



Copy

- ① Server URL
- ② Stream name/key

How to Connect with YouTube Live ~Step04~



Windows P2 Network Setting Software

AJ-JJLN01G (P2 Network Setting Software) is application software that works on Windows PC.
This is a software tool that makes it easy to set up the network functions of P2 equipment. It can encrypt setting data (password, etc.) and create setting files on SD memory cards.

Windows

P2 Network Setting Software

Free Download

Related website: [Network Functions Link to from the Field in Real Time](#)

● Release Note

Ver. 2.3.0 (Oct. 30, 2018)
The setting up function of TVU streaming was added.

Ver. 2.2.0 (Feb. 27, 2018)
The setting up function of RTMP streaming was added.
You can send streaming data to streaming distribution service that support RTMP.

Ver. 2.0.0 (Apr. 25, 2017)
Information about a bonding device such as the state of communication, battery remaining capacity, etc. can be displayed on the camera.
This function is extended so that the information can be obtained via Live-U central server. Network Profile data is used for this operation, so the P2 Network Setting Software is changed so that the data can be edited.

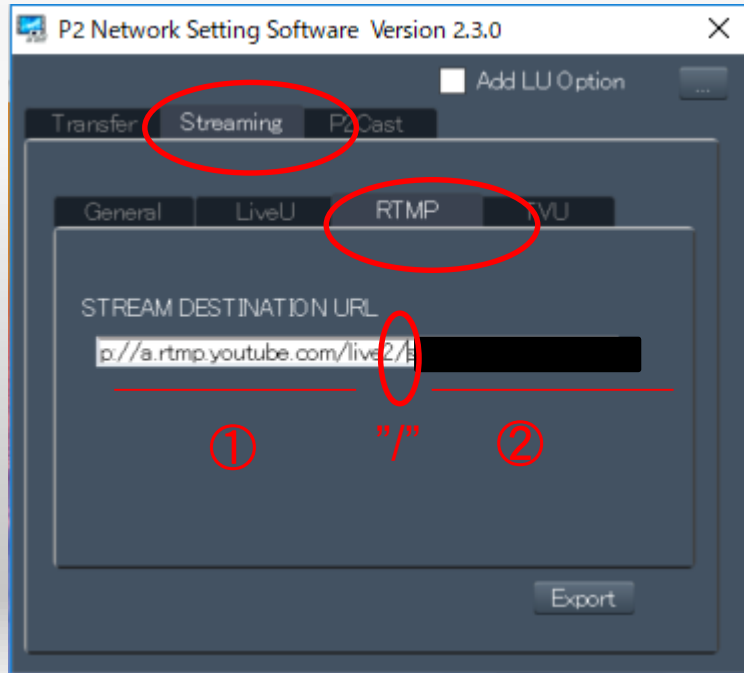
● System Requirements

- OS
Windows 7 Professional (SP1), Ultimate (SP1) 32bit/64bit

Download
“P2 Network Setting Software”
from below URL

https://www.pass.panasonic.co.jp/pro-av/support/content/download/EN/ep2/main/nw_setting_e.htm

How to Connect with YouTube Live ~Step05~



Inset SD card to your Laptop/PC



Open "P2 Network Setting Software"



"Streaming" > "RTMP"



Paste the

① Server URL + "/" + ② Stream name/key
(which are copied in step03)

*Please paste "/" between ① and ②



"Export" to save this info. with SD card

How to Connect with YouTube Live ~Step06~



Insert SD card to the **SLOT1** of AG-CX350 which have data of “①Server URL and ②Stream Key”



[Control AG-CX350]
NETOWRK>STREAMING>CONNECTION
INFO.>MEMORY



[Control AG-CX350]
NETOWRK>STREAMING>LOAD(SD CARD)>YES



[Control AG-CX350]
NETOWRK>STREAMING>SAVE(SD CARD) >YES



**Connection between YouTube Live and AG-CX350
has been completed!**

[Control AG-CX350]
NETOWRK>STREAMING>CONNECTIO
N INFO.>SD CARD



How to Connect with YouTube Live ~Step07~



NETWORK>DEVICE SEL>LAN



NETWORK>NETWORK FUNC>STREAMING



NETWORK>STREAMING>START TRIGGER>CAMERA



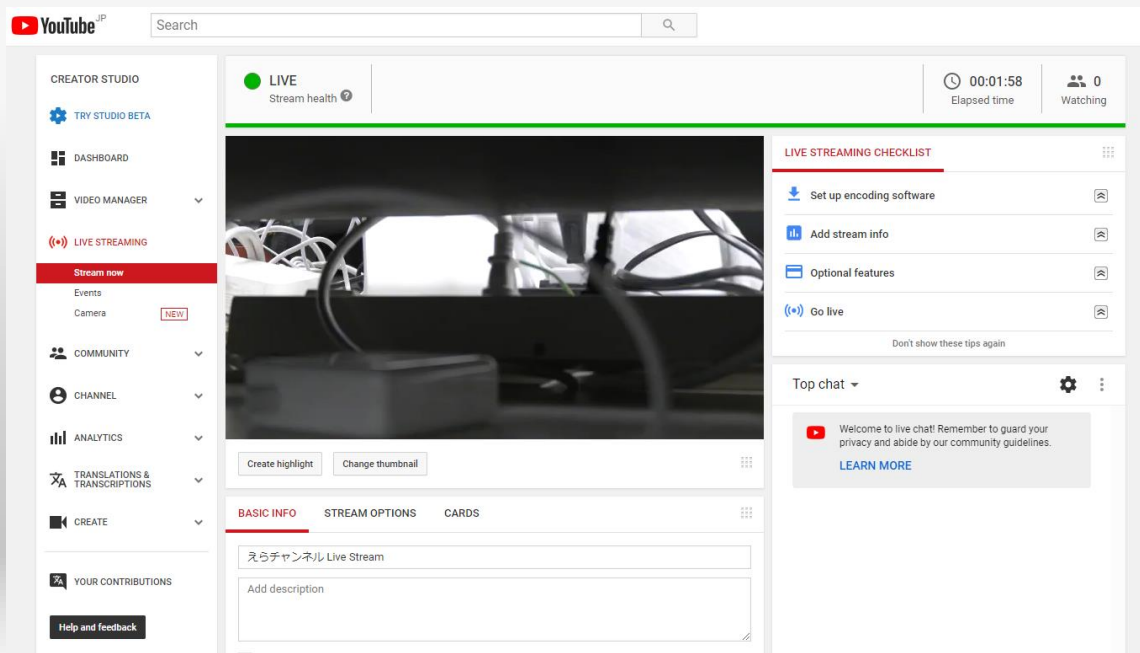
NETWORK>STREAMING>START>ON

YouTube Live preparation will be automatically set

If CX350 cannot connect to Internet, IP setting may have problem.
Please try below to fix that problem.

※NETWORK>LAN PROPATY>IPv4 SETTING>DHCP>CLIENT

How to Connect with YouTube Live ~Step07~



If CX350 could connect to Internet your YouTube will be like left picture



YouTube Live will START automatically