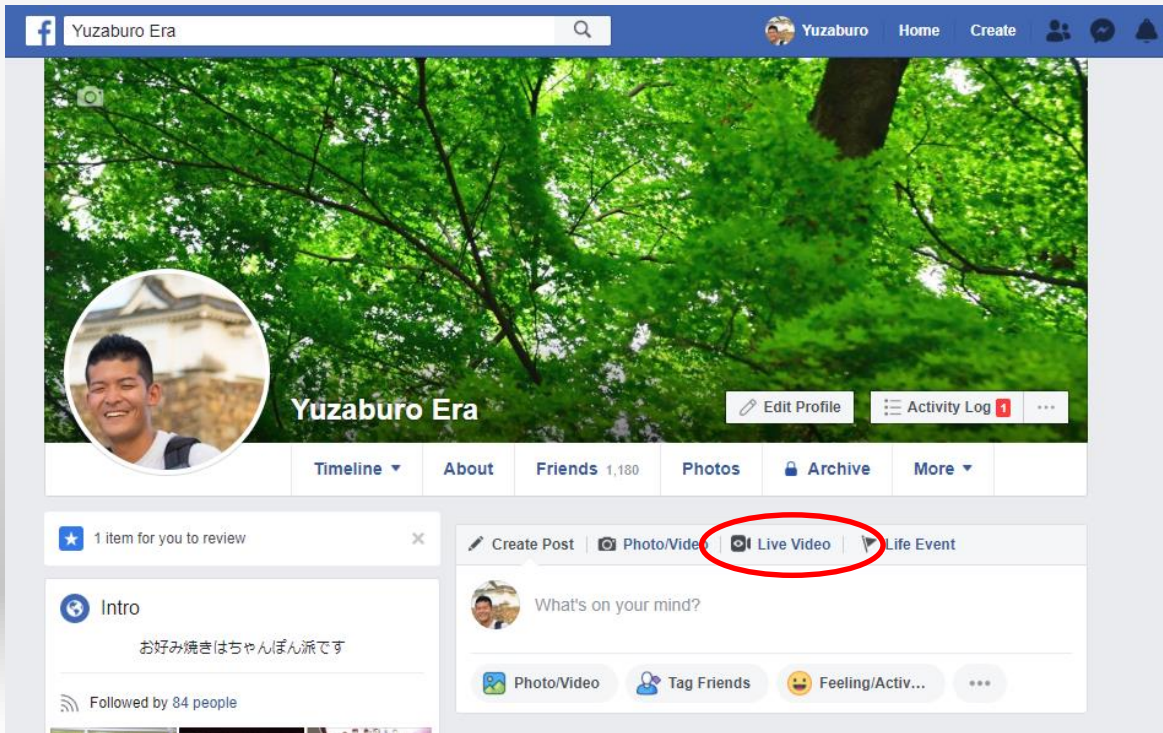


How to Connect with Facebook Live ~Step01~



Go to your own Facebook page



Click “Live Video”

How to Connect with Facebook Live ~Step02~



Camera **Connect**

Connect Your Live Stream to the Live API

Use live streaming software or a hardware encoder. [Learn more](#)

1. Choose where you want to post your broadcast on the right.
2. Preview your broadcast with a stream key or paired encoder.

Stream Key Paired Encoder

Enter the information below into your software's settings.

- Use a secure connection (SSL) ⓘ
- Use a persistent stream key ⓘ
- Use a backup stream ⓘ

Server URL ⓘ

Stream Key ⓘ

3. Select **Go Live** in the bottom right corner.

Don't put third-party video ads in your live video. For example, don't include bumpers, pre-roll, mid-roll or post-roll. Ensure any pre-recorded content is clearly distinguishable from live content.

Select "Connect"



Copy

① Server URL

② Stream Key

☆ Please check the box of "Use a persistent stream key" and your "② Stream Key" is fixed.

How to Connect with Facebook Live ~Step03~



Windows P2 Network Setting Software

AJ-JJLN01G (P2 Network Setting Software) is application software that works on Windows PC.
This is a software tool that makes it easy to set up the network functions of P2 equipment. It can encrypt setting data (password, etc.) and create setting files on SD memory cards.

Windows

P2 Network Setting Software

Free Download

Related website: [Network Functions Link to from the Field in Real Time](#)

● Release Note

Ver. 2.3.0 (Oct. 30, 2018)
The setting up function of TVU streaming was added.

Ver. 2.2.0 (Feb. 27, 2018)
The setting up function of RTMP streaming was added.
You can send streaming data to streaming distribution service that support RTMP.

Ver. 2.0.0 (Apr. 25, 2017)
Information about a bonding device such as the state of communication, battery remaining capacity, etc. can be displayed on the camera.
This function is extended so that the information can be obtained via Live-U central server. Network Profile data is used for this operation, so the P2 Network Setting Software is changed so that the data can be edited.

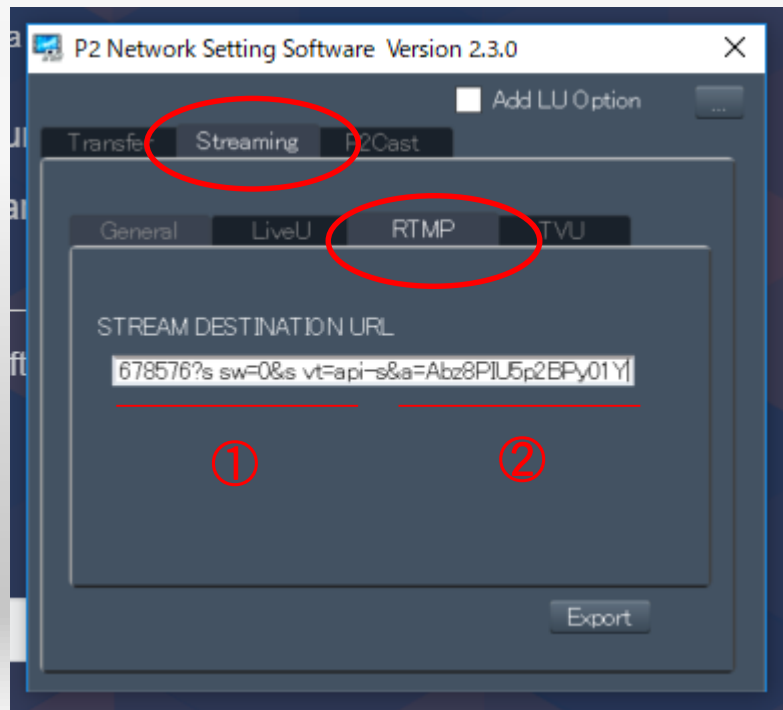
● System Requirements

- OS
Windows 7 Professional (SP1), Ultimate (SP1) 32bit/64bit

Download
“P2 Network Setting Software”
from below URL

https://www.pass.panasonic.co.jp/pro-av/support/content/download/EN/ep2/main/nw_setting_e.htm

How to Connect with Facebook Live ~Step04~



Inset SD card to Laptop



Open "P2 Network Setting Software"



"Streaming" > "RTMP"



Paste the

① Server URL

② Stream Key

(which are copied in step02)

*Please paste without space between ① and ②



"Export" to save this information with SD card

How to Connect with Facebook Live ~Step05~



Insert SD card to the **SLOT1** of AG-CX350 which have data of “①Server URL and ②Stream Key”



[Control AG-CX350]
NETOWRK>STREAMING>CONNECTION
INFO.>MEMORY



[Control AG-CX350]
NETOWRK>STREAMING>LOAD(SD CARD)>YES

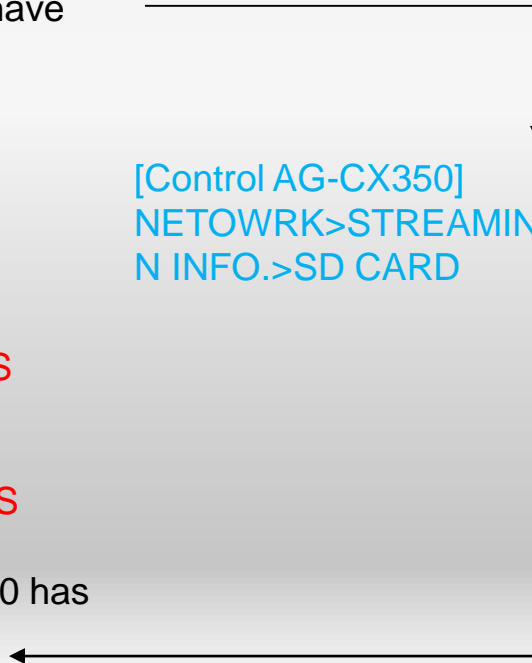


[Control AG-CX350]
NETOWRK>STREAMING>SAVE(SD CARD) >YES



Connection between Facebook Live and AG-CX350 has
been completed!

[Control AG-CX350]
NETOWRK>STREAMING>CONNECTIO
N INFO.>SD CARD



How to Connect with Facebook Live ~Step06~



NETWORK>DEVICE SEL>LAN



NETWORK>NETWORK FUNC>STREAMING



NETWORK>STREAMING>START TRIGGER>CAMERA



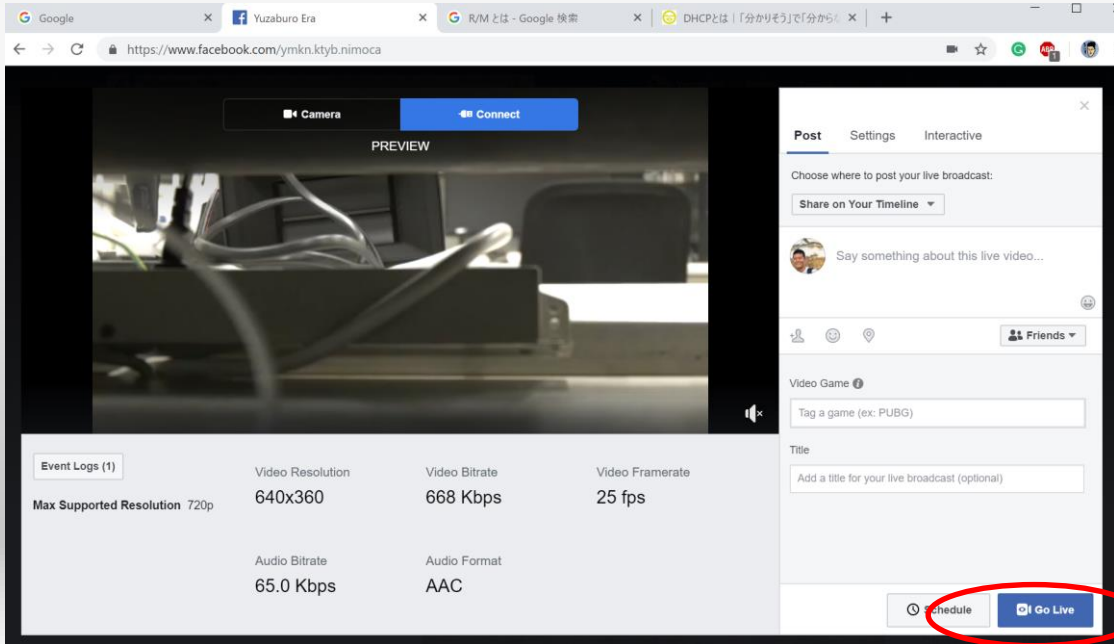
NETWORK>STREAMING>START>ON

Facebook Live preparation will be automatically set

If CX350 cannot connect with Internet, IP setting may have problem
Please try below to fix that

※NETWORK>LAN PROPATY>IPv4 SETTING>DHCP>CLIENT

How to Connect with Facebook Live ~Step07~



If CX350 could connect to Internet your Facebook will be like left picture

↓
Click "Go Live"

↓
Facebook Live START